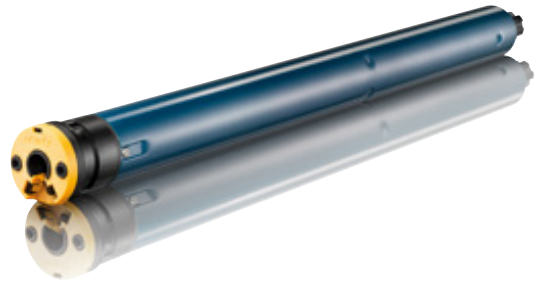


# ALTUS 40 RTS 3/30

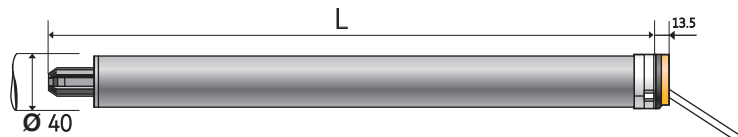


## FEATURES & BENEFITS

- RTS Technology
- Suitable for interior & exterior application
- Compact multi-purpose motor with integrated radio control
- Radio control allows blinds to be operated effortlessly and remotely
- 'My' Favourite setting sets blind to favourite position
- Easy installation and integration to pre-installed systems. Antenna completely integrated contributes to motor compactness design.
- Memory capacity: 12 channels and 3 sensors
- Suitable for tubes diameter 40 mm (internal diameter)

## SYSTEM COMPATIBILITY

- ROLLER SYSTEM
- ROMAN SYSTEM
- VENETIAN SYSTEM
- PLEATED SYSTEM
- SHEER SYSTEM



Note: Motor Options are also dependent on compatibility with our minimum motor widths chart.

## TECHNICAL SPECIFICATIONS

POWER (NM):	3
NOMINAL VOLTAGE/FREQUENCY:	230V / 50 Hz
NOISE LEVEL:	52 dB(A)*
SPEED (RPM):	30
LIFT (KG):	9.5
MINIMUM MOTOR WIDTH:	630mm
RADIO FREQUENCY:	43342 MHz
THERMAL TIME:	4mn
PROTECTION INDEX:	IP44
INSULATION CLASS:	Class II
CABLE TYPE:	PVC

\*Sound pressure at a distance of 1mtr from the carrier product at nominal torque.