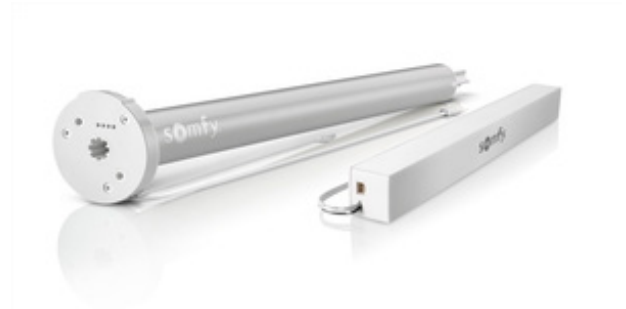


ALTUS 28 WIREFREE

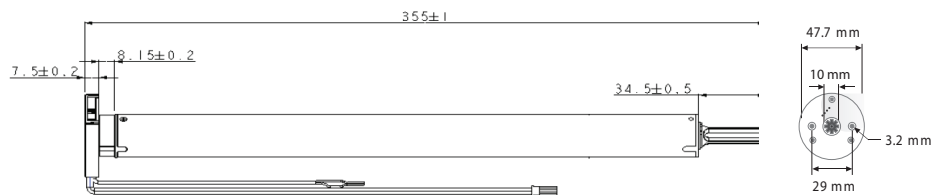
FEATURES & BENEFITS

- Wirefree & RTS Technology
- External Rechargeable Battery included (Li-ion External Battery).
Powered by a compact lithium-ion battery.
- Suitable for interior application
- Controller Interface includes low battery indicator that can easily be reset
- 'My' Favourite setting sets blind to favourite position. Soft start and soft stop.
- White thin round head for discreet blending and easy integration
- Radio control allows blind to move effortlessly and smoothly.
- Fits small diameter tubes for compactness



SYSTEM COMPATIBILITY

- ROLLER SYSTEM



TECHNICAL SPECIFICATIONS

POWER (NM):	1.5
NOMINAL VOLTAGE/FREQUENCY:	230V / 50 Hz
RADIO FREQUENCY:	433.42 MHz
NOISE LEVEL:	54 dB(A)*
SPEED (RPM):	27
LIFT (KG):	5.0
MINIMUM MOTOR WIDTH:	410
THERMAL TIME:	4mn
PROTECTION INDEX:	IP20 (Interior use only)
INSULATION CLASS:	Class III

*Sound pressure at a distance of 1 mtr from the carrier product at nominal torque.