

Mottura by Vertilux



HEALTHCARE SOLUTIONS

TRACK SYSTEM
SEPARÈ 458

HEALTHCARE FABRIC RANGES
PLAIN AND PRINTED FABRIC
REVERSIBLE FABRIC

DRAPED CURTAIN TRACK SYSTEM USED FOR SEPARATING AREAS SUCH AS HOSPITAL BEDS. TRACK IS SUITABLE FOR SHOWERS AND WORKS WELL FOR BOTH PROFESSIONAL AND HOSPITAL ENVIRONMENTS. ADD OUR RANGE OF HEALTHCARE FABRICS AND YOU HAVE YOUR HEALTHCARE DESIGN SOLUTION.

THE SEPARÈ 458 CURTAIN TRACK SYSTEM PARTNERS WITH THE HEALTHCARE RANGE OF FABRICS. FABRICS THAT ARE INHERENTLY FLAME RETARDANT FOR THE LIFE OF THE FABRIC. FABRIC WITH ANTI-MICROBIAL PROPERTIES, FOR THE LIFE OF THE FABRIC ON PLAINS AND PRINTED.

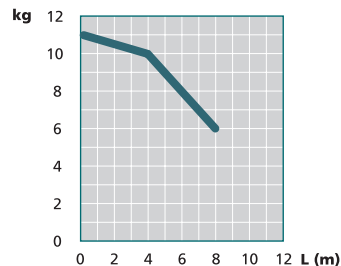
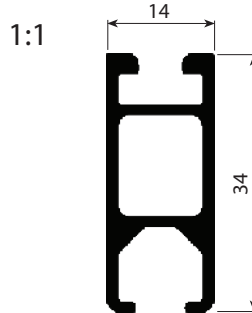
CURTAIN TRACKS AND FABRICS THAT MEET BOTH THE FUNCTION, AND STRICT DESIGN REQUIREMENTS FOR YOUR HOSPITAL, HEALTH CLINIC, LIFESTYLE LIVING & MEDICAL PRACTICE NEEDS.

SEPARÈ 458 TRACK SYSTEM

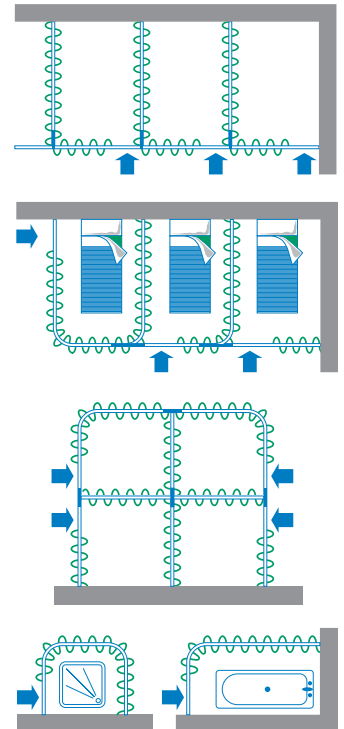


SPECIFICATION

- 6060 T6 UNI 8278 extruded aluminium alloy track
- Width 14mm; Height 34mm
- Sliding channel: 6mm
- Minimum radius of curvature: 90° curves: 12cm - wide radius curves: 50cm
- Track colours: Anodised Silver; or powdercoated Pearl White
- Self-lubricating acetylic accessories
- Sliding is guaranteed by self-lubricating polyethylene slides or by roller gliders.

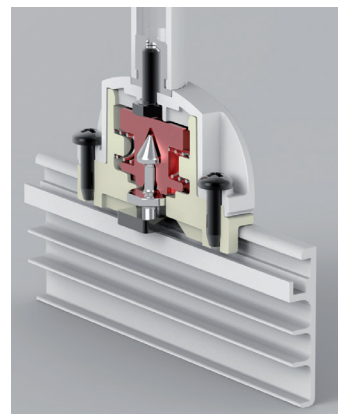
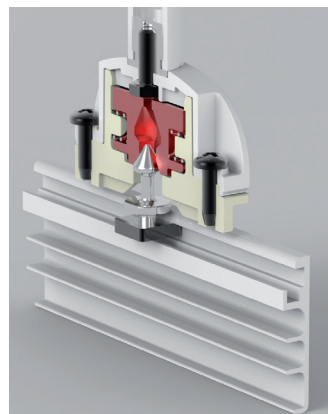
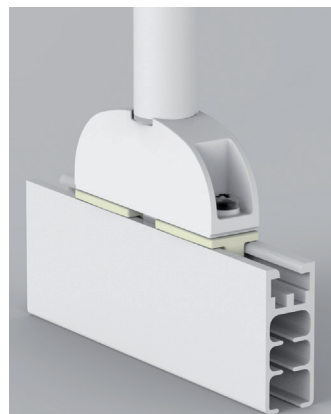


PARTITIONING



S.R.D. - SAFETY RELEASE DEVICE

The benefit of the S.R.D. mechanism is that it is not compromised when the release device is activated. Additionally, the safety device does not require a specialist to reset the system.



HEALTHCARE PLAIN & PRINTED FABRIC RANGE – PLAIN BASECLOTH COLOURS:



Comet

Quality:	100% Trevira CS® Bioactive Antimicrobial Fabric contains a Biocidal Product: "Silver Sodium Zirconium Hydrogenphosphate – CAS-# 265647-11-8" built into the fibre polymer to counter the settlement and growth of micro-organisms in/on the article
Width:	250cm (plain and unprinted) 240cm (with printed design) Width becomes length when railroaded, eliminates need for joins when used as continuous curtaining.
Type of weave:	Plain weave
Pattern Repeat:	Depends on print
Availability:	Indent
Colours:	Cloud, Sky, Corn, Garden, Peach, Straw, Stone



Starlight

Quality:	100% Trevira CS® Bioactive Antimicrobial Fabric contains a Biocidal Product: "Silver Sodium Zirconium Hydrogenphosphate – CAS-# 265647-11-8" built into the fibre polymer to counter the settlement and growth of micro-organisms in/on the article
Width:	250cm (plain and unprinted) 240cm (with printed design) Width becomes length when railroaded, eliminates need for joins when used as continuous curtaining.
Type of weave:	Satin
Pattern Repeat:	Depends on print
Availability:	Indent
Colours:	Cloud, Sky, Corn, Garden, Peach, Straw, Stone

EXAMPLES OF INSITU PRINTED FABRICS:



On left: Pattern Leaf in custom colour on basecloth Comet colour Cloud.
On right: Custom coloured Comet basecloth



Pattern Hoop in colour Charcoal on basecloth Comet colour Cloud.

HEALTHCARE REVERSIBLE FABRIC RANGE



Shown in Spring (Side A)

Rainstorm

Quality:	100% Trevira CS [®] , SILVERPLUS [®] Antimicrobial
	Fabric contains a Biocidal Product: Contains silver chloride by specific treatment to counter the settlement and growth of micro-organisms in/on the treated article.
Width:	Approx 280cm (width becomes length when railroaded, eliminates need for joins when used as continuous curtaining)
Pattern Repeat:	29cm (H) x 25cm (W) approx. when railroaded
Availability:	Indent
Colours:	Ice, Neutral, Spring, Elephant, Marine (all reversible)



Shown in Neutral (Side A)

Retro

Quality:	100% Trevira CS [®] , SILVERPLUS [®] Antimicrobial
	Fabric contains a Biocidal Product: Contains silver chloride by specific treatment to counter the settlement and growth of micro-organisms in/on the treated article.
Width:	Approx 280cm (width becomes length when railroaded, eliminates need for joins when used as continuous curtaining)
Pattern Repeat:	29cm (H) x 28cm (W) approx. when railroaded
Availability:	Indent
Colours:	Ice, Neutral, Spring, Elephant, Marine (all reversible)



Shown in Neutral (Side A)

Rhythm

Quality:	100% Trevira CS [®] , SILVERPLUS [®] Antimicrobial
	Fabric contains a Biocidal Product: Contains silver chloride by specific treatment to counter the settlement and growth of micro-organisms in/on the treated article.
Width:	Approx 280cm (width becomes length when railroaded, eliminates need for joins when used as continuous curtaining)
Pattern Repeat:	29cm (H) x 46.5cm (W) approx. when railroaded
Availability:	Indent
Colours:	Ice, Neutral, Spring, Elephant, Marine (all reversible)



Shown in Marine (Side A)

Sprout

Quality:	100% Trevira CS [®] , SILVERPLUS [®] Antimicrobial
	Fabric contains a Biocidal Product: Contains silver chloride by specific treatment to counter the settlement and growth of micro-organisms in/on the treated article.
Width:	Approx 280cm (width becomes length when railroaded, eliminates need for joins when used as continuous curtaining)
Pattern Repeat:	29cm (H) x 19.5cm (W) approx. when railroaded
Availability:	Indent
Colours:	Ice, Neutral, Spring, Elephant, Marine (all reversible)

PLEASE NOTE: Textile details and their colourways may not appear true to colour or scale due to the nature of the media. Samples can be forwarded on request to your representative or by emailing info@vertilux.com.au.