

# 1.13c Motorised Kasset Tensioned System with Constant Box

## Technical Information

1. Face cover plate	Extruded aluminium manufactured to ISO9001.
2. Back rail section	Extruded aluminium manufactured to ISO9001.
3. Headrail endcaps L/R	Moulded from U.V resistant acetal.
4. Bracket male	Zinc coated steel.
5. Bracket female	Zinc coated steel.
6. Tube	Extruded aluminium manufactured to ISO9001.
7. Idle end	Moulded from U.V. resistant acetal.
8. Motor mount	Moulded from U.V. resistant acetal.
9. Base rail	Extruded aluminium manufactured to ISO9001.
10. End cap	Moulded from U.V. resistant acetal.
11. Kasset bracket	Extruded aluminium manufactured to ISO9001.

## Dimensions & Limitations

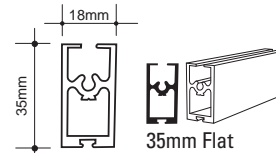
	<b>100mm Motor</b>
MAXIMUM WIDTH*	3000mm
MINIMUM DROP*	500mm
MAXIMUM DROP*	4000mm

**\*\*The above is a guide only - Dependent on Fabric type used due to variable fabric thickness.\***

**\*\*\* Alternate Cord Lengths & Kg Capacities are available on request. Lead times may vary.**

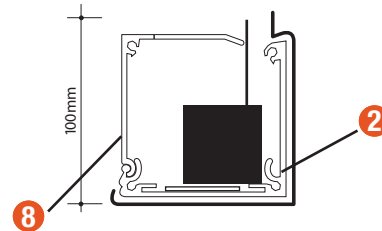
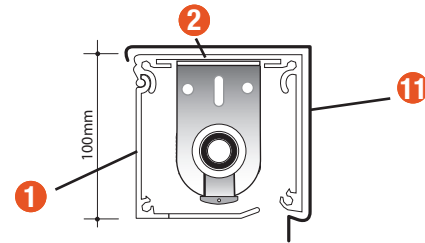
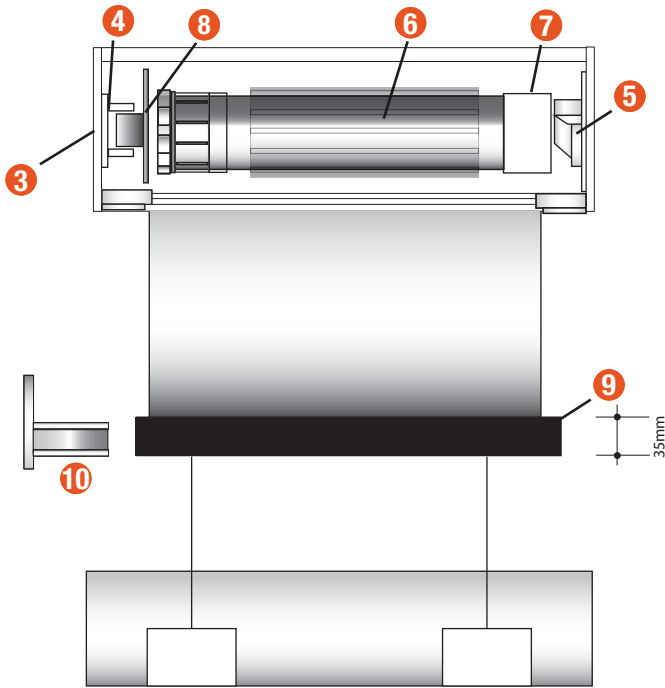
**Note: Sizes with Fabric widths typically over 3000mm will void warranty.**

## Standard Base Rail



**NOTE: Dimensions relate to height of Base Rail.**

## Componentry



## Assembly Options

